



NEW YORK CITY DEPARTMENT OF TRANSPORTATION DIVISION OF BRIDGES

Robert Collyer, Chief Bridge Officer and Deputy Commissioner

March 3, 2021

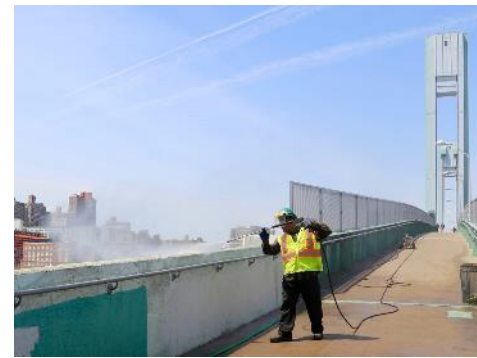




Division of Bridges

NYCDOT Bridges owns, operates, and maintains 792 bridges and 4 tunnels throughout New York City, including:

- The Brooklyn, Manhattan, Williamsburg and Queensboro Bridges
- Harlem River Bridges
- Belt Parkway Bridges
- Pedestrian bridges, elevated roadways, 24 movable bridges, 53 culverts, 4 tunnels, and 600+ walls





- **Bureau of Bridge Maintenance, Inspection and Operations**

Paul Schwartz, PE, Associate Deputy Commissioner

- **Bureau of Bridge Capital Design and Construction**

David Dunn, PE, Assistant Commissioner

- **Engineering Review and Support Bureau**

Anil Vyas, PE, Deputy Chief

- **Bureau of Management and Support Services**

Dorothy Roses, Assistant Commissioner

- **Design Build and Emergency Contracts**

Tanvi Pandya, PE, Acting Executive Director



NYCDOT Operational Divisions

Ferries

- Ferry Operations
 - Safely and efficiently operates the Staten Island Ferry (25 million annual passengers)
 - Regulates private ferries operating within the City of New York.
- Terminal Operations
- Maintenance and Repair
- Ferry Engineering





NYCDOT Operational Divisions

- **Roadway Repair and Maintenance**
 - Arterial Maintenance
 - Asphalt Operations
 - Milling Contract Management
 - Resource Management
 - Street Maintenance



© NYC DOT



NYCDOT Operational Divisions

- **Sidewalk Inspection and Management**
 - Citywide Concrete
 - Sidewalk Program
 - Office of Emergency Response
 - Highway Inspection and Quality Assurance
 - Builder's Waivers Program
 - Office of Special Events
 - Pedestrian Ramp Program





NYCDOT Operational Divisions

- **Transportation Planning and Management**
 - Responsible for streets infrastructure that regulates traffic flow, parking and commercial deliveries.
 - Ensures the safety of motor vehicle occupants, pedestrians, and cyclists.
 - Developing projects that further safety, efficiency, and sustainability goals.
 - Traffic Control and Engineering
 - Transit Development
 - Regional and Strategic Planning
 - Street Improvement Programs
 - Research, Safety and Implementation
 - Design and Construction





NYCDOT Operational Divisions

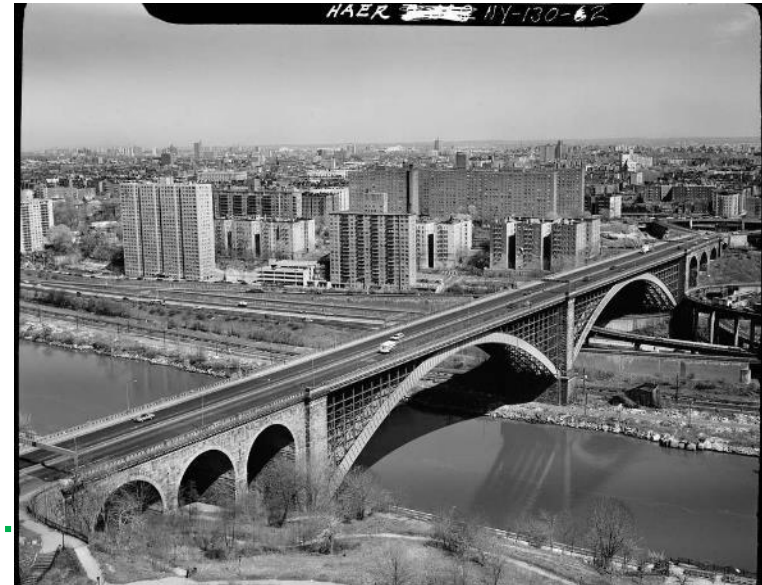
- **Traffic Operations**

- The division operates and maintains off-street parking facilities and metered parking through the city.
- Oversees signal controls and other electrical traffic control devices.
- Maintains the city's street lighting infrastructure.
- Oversees the red light, bus lane, and Speed Camera programs, as well as the Traffic Management Center and the Vehicular Traffic Control System.
- Oversees federal funding for intelligent transportation system efforts.



FY21 – REI & CONSTRUCTION

- Broadway Bridge over the Harlem River (CSS & Construction)
- West 79th Street over Amtrak and Rotunda (REI, CSS, and Construction)
- Rehab of Park Avenue Viaduct, North Side of East 42nd (Construction)
- Emergency Contract for 181st (Washington Bridge) over the Harlem River (REI, CSS, and Construction)



FY21 – DESIGN

- East 183rd St. over Metro North
- East 188th St. over Metro North
- BSHP over Ocean Avenue
- BSHP over Bedford Avenue
- BSHP over Nostrand Avenue
- BSHP over Sheepshead Bay Road



FY22 – REI & CONSTRUCTION

- Boston Road over the Hutchinson River (REI, CSS, & Construction)
- West Tremont Ave over Metro-North (Construction)
- Williamsburg Bridge Contract 9 (REI, CSS, & Construction)



FY22 – DESIGN

- Woodhaven Boulevard over Atlantic Ave
- East 14th Street Ped Bridge
- BCIP over Dutch Broadway – 115 Ave



FY23 – REI & CONSTRUCTION

- BHSP over Ocean Ave, Nostrand Ave, Sheepshead Bay Rd., and Bedford Ave (REI, CSS, & Construction) – **All Design Build**
- BCIP over Dutch Broadway – 115 Ave (REI, CSS, & Construction)
- East 188th St. over Metro-North (REI & Construction)
- 191st Street Pedestrian Tunnel to IRT #1 Subway (Construction)



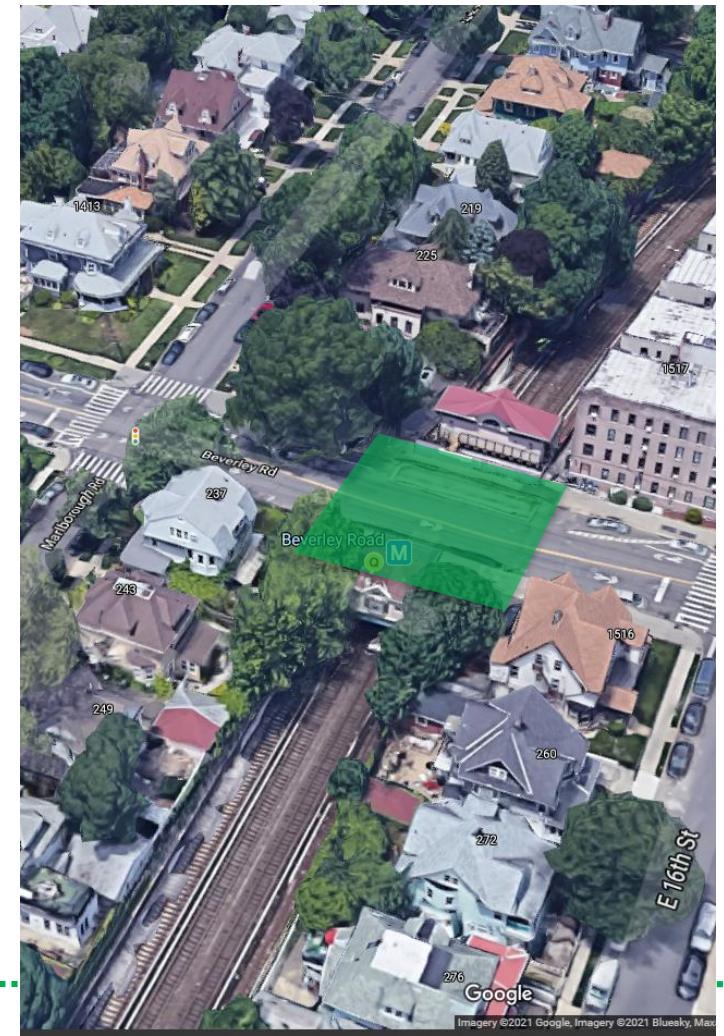
FY23 – DESIGN

- Merrick Boulevard over BLP
- Sunrise Highway Westbound Bridge over BLP
- Union Street over 278I BQE
- Kane Street over 278I BQE
- Seeley Street over Prospect Avenue



FY24 – REI & CONSTRUCTION

- Parkside Ave and Ocean Ave RR Bridges (Construction)
- Boston Road over the Bronx River (REI & Construction)
- Seeley Street over Prospect Avenue (REI, CSS, & Construction)
- 14th Street Pedestrian Bridge (CSS & Construction)
- Beverly Road over BMT Subway, Brighton (REI, CSS & Construction)



POTENTIAL DESIGN BUILD PROJECTS

East 183rd Street and East 188th Street

- Existing Bridge Description
 - Two single-span bridges, spanning roughly 60 ft, with partially encased steel girders composite with a R/C deck, and supported on gravity wall abutments
 - Crosses four tracks of Metro-North Rail Road
- Anticipated Scope
 - Full Bridge Replacement



East 183rd Street Bridge



East 188th Street Bridge

POTENTIAL DESIGN BUILD PROJECTS

Belt Parkway Bridges

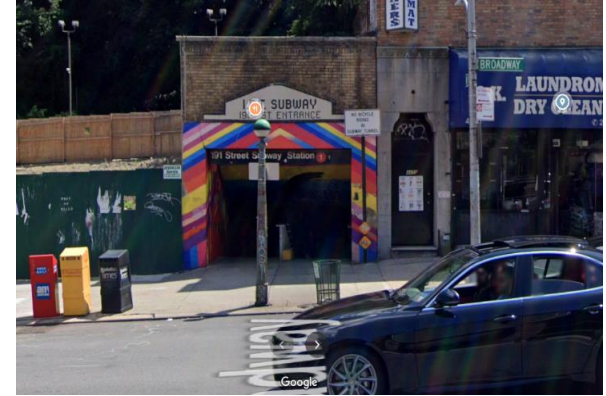
- Existing Bridge Description
 - Four roadway bridges, with span lengths ranging between 80 ft and 170 ft, made up of steel girders composite with a R/C deck and supported on R/C piers and abutments.
- Anticipated Scope
 - To Be Determined
- Anticipated Cost
 - \$156 M



POTENTIAL DESIGN BUILD PROJECTS

East 191st Street Tunnel

- Existing Description
 - Pedestrian tunnel, roughly 906 ft long, connecting the entrance at Broadway to the entrance at St. Nicholas Ave. at 191st St. Station
- Anticipated Scope
 - To Be Determined
- Anticipated Cost
 - TBD



COMPONENT REHABILITATION PROJECTS

- Extending the service life of bridges in New York City in consideration of future projects.
- Identifies the element or elements (beam, column, abutment, etc.) most in need of repair in order to extend the bridge's life for at least another 10 years.



MANAGING THROUGH CHANGE

- COVID-19
- Budget Issues
- Stimulus Issues

THANK YOU!



NYC DOT



NYC DOT



nyc_dot



NYC DOT