



DEDICATED TO THE NATIONAL DEFENSE

*The Society of  
American Military Engineers*  
*New York City Post – SAME's TOP Post (Large) in 2003*

*Office of the Secretary*  
c/o US Army Corps of Engineers, North Atlantic Division  
301 General Lee Avenue  
Fort Hamilton Military Community, Brooklyn, NY 11252-6700  
Telephone (718) 921-5206 or (718) 765-7112 FAX (718) 504-4281  
e-mail [michael.scarano@nad02.usace.army.mil](mailto:michael.scarano@nad02.usace.army.mil)

OFFICERS

*President*  
COL Richard J. Polo, USA  
*Vice President (Military)*  
Lt. Col. Charles Klinge, USA  
*Vice President (Civilian)*  
Judith Cooper  
*Jr. Vice President*  
Durjhodan "Chris" Ragnauth  
*Secretary*  
Michael Scarano  
*Treasurer*  
James N. Parks  
*Assistant Secretary*  
Richard V. Cicchetti  
*Assistant Treasurer*  
Eileen F. Schulman

DIRECTORS

Robert Adamski (to 2006)  
Frank Arland (to 2007)  
Albert Bast (to 2006)  
Howard Chynsky (to 2008)  
Michael Della Rocca (to 2008)  
William H. Goldstein (to 2007)  
Greg Kelly (to 2008)  
Francis J. Lombardi (to 2008)  
Vincent Mangiere (to 2007)  
Mysore Nagaraja (to 2008)  
Achille Niro (to 2007)  
Joan McDonald (to 2008)  
Elliot Sander (to 2007)  
Harvey S. Sands (to 2006)  
John F. Spencer (to 2007)  
Angelo Tomasetti (to 2006)

LEGAL ADVISOR

Robert A. Rubin

SPECIAL ADVISORS

Marvin J. Bloom  
John Dionisio  
Cdr. C. William Eijlers, USN (Ret)  
Leo Field  
Col. F. H. Griffis  
S. S. Greenfield  
Keith Itzler  
Nick Ivanoff  
Martin H. Kendall  
Maher Labib  
Hugh Lacy  
Greg Matthews  
Howard Major  
Jay McGraw  
Elaina Moy  
Joseph Porrovecchio  
Joseph Puzio  
Edward Schmeltz  
Dominick Servedio  
Allan Shapiro  
Phil Simmons  
Jan Tuchman  
Lt. Col. Edward B. Wenners, USA (Ret)  
Michael Zetlin

THE NYC POST SAME  
SCHOLARSHIP FUND

*President*  
Col F. H. Griffis, USA (Ret)  
*Secretary-Treasurer*  
Lt. Col. Edward B. Wenners, USA (Ret)  
*Ass't Secretary-Treasurer*  
Michael Scarano

STANDING COMMITTEES

*Awards*  
Michael J. Kaleda  
*Dinner-Dance*  
Judith Cooper, Chairwoman  
*Education and Mentoring*  
Elaina Moy, Chairman  
*Environmental & Technology*  
Joseph Porrovecchio, Chairman  
*Meetings and Programs*  
Lt. Col. Charles Klinge, USA, Chairman  
*Membership*  
Albert Bast, Chairman  
*Publicity and Development*  
Greg Kelly, Chairman  
*Readiness and Homeland Security*  
Robert Adamski, Chairman  
*Student Activities*  
Judith Cooper, Chairwoman  
*Young Members*  
Durjhodan "Chris" Ragnauth, Chairman

3 March 2006

It is the policy of the United States to have an Emergency Mobilization Preparedness Capability that will ensure that government at all levels, in partnership with the private sector and the American people, can respond decisively and effectively to any major national emergency with the defense of the United States as first priority. National Security Council NS DD-47

To support government at all levels in their emergency preparedness capabilities, the NYC Post of the Society of American Military Engineers (SAME), in cooperation with its corporate member firms, has published a Fast Start plan.

Our Fast Start plan outlines how civilian architectural and engineering firms, construction contractors, materials suppliers, and other firms can interact with military and government construction agencies in the New York City area to effectively respond to any major emergency. For those in the private sector, you will find names and phone numbers of our Board members you can contact in the event you wish to make your firm known as a resource to support emergency relief or recovery efforts. For those in the public sector, you will find the names and addresses of our sustaining member firms prepared to support disaster relief who can respond in a disciplined manner to prevent further loss and restore normalcy.

We invite you to become a member of SAME, if you are not already and to share with us your ideas, abilities, and experiences. Only through the efforts of concerned organizations such as yours can we achieve an effective level of preparedness. What better way to show our support to our nation than by working together to increase our emergency preparedness and defense readiness? We look forward to your active participation.

We hope you find the plan "user friendly." Should you have questions or comments on this document, please contact Mr. Robert Adamski, P.E., V.P., Gannett Fleming, E &A, phone (516) 671-8440 or e-mail [radamski@gfnet.com](mailto:radamski@gfnet.com)

Richard J. Polo Jr.  
COL, EN  
NYC Post President

# **THE SOCIETY OF AMERICAN MILITARY ENGINEERS**



## **OPERATION FAST START NYC POST READINESS PLAN 2006**

Approved by the Board of Directors 15 February 2006



**GANNETT FLEMING ENGINEERS  
AND ARCHITECTS, P.C.**  
480 Forest Avenue  
P.O. Box 707  
Locust Valley, NY 11560-0707

**Office: (516) 671-8440**  
Fax: (516) 671-3349  
Internet: [www.gannettfleming.com](http://www.gannettfleming.com)

1 March 2006

Memo to the President

New York City Post

Society of American Military Engineers

The enclosed document is an update to the plan distributed in 2004, which was developed using the template provided by the National Readiness Committee and tailored to meet the NYC Post requirements. The major change is to reflect the new National Response Plan and add additional Emergency Support Functions (ESFs.) The Post Responders have been changed to use volunteers instead of Board members since they might not be available during an incident that needs response. It was developed by the Post Readiness Committee consisting of: Harvey Sands, Co-chair, Mitch Becker, Leo Fields, Allan Haack, Frank Lombardi, Maryann Morrocolo, Joseph Porrovecchio, Mike Scarano, Allan Shapiro and Steve Vianelli. It was approved by the Post Board of Directors at the 22 February 2006 meeting. The key to building an effective Fast Start plan is to create and sustain communications among interested parties prior to, during, and after contingency and emergency situations. It will be distributed to the agencies listed in the distribution section (Appendix G) for their comment and use.

I hope you find the plan "user friendly." Should you have questions or comments on this document, please contact Mr. Robert Adamski, P.E., V.P. Gannett Fleming, E &A, phone (516) 671-8440 or e-mail <[radamski@gfnet.com](mailto:radamski@gfnet.com)>.

A handwritten signature in black ink that reads "Robert E. Adamski".

ROBERT E. ADAMSKI, P.E., F. SAME  
LTC, EN, USAR Retired  
Chairman, NYC Post Readiness and Homeland Security Committee

**NYC POST SAME FAST START  
READINESS PLAN  
TABLE OF CONTENTS**

	Page
Readiness Committee Transmittal Letter	i
Table of Contents	ii
I. Introduction	1
II. Purpose	1
III. Civil Preparedness and Readiness	2
A. Description of Natural and Man-made Threats Affecting Area Work Effort Requirements	2
IV. Mobilization Readiness	3
V. Key Programs	3
A. Local Response Plans NYC Office of Emergency Management	4
B. State Response Plans New York State Emergency Management Office	5
C. Federal Response Plan	5
VI. Contracting Agencies	6
VII. The Process	7
A. Reporting	7
B. Operations	7
C. Procedures	7
D. Liability	7
E. Design Standards/Standard Designs	7
F. Manpower and Equipment Readiness	8
VIII. The Feedback Mechanism	8
IX. Resources	8

APPENDICES

- A. Sustaining Members NYC Post
- B. Agency Listing
- C. Federal Agency Responsibilities
- D. New York State Response Plan
- E. Local Response Plan(s)
- F. NYC Post Readiness Plan and Phone Tree
- G. Distribution
- H. References:
  - 1. Guide for All-Hazard Emergency Operations Planning (State & Local Guide) by FEMA
  - 2. Emergency Management Guide for Business & Industry by FEMA
  - 3. National League of Cities Homeland Security
  - 4. SEER Plan manual
  - 5. Web Sites

## OPERATION FAST START

### I. INTRODUCTION

- A. The purpose of the NYC Post *Fast Start* plan is to assist federal, state and local governments in recovery from natural and man-made disasters/emergencies.
- B. The NYC Post of the Society of American Military Engineers (SAME) encompasses the New York City metropolitan area.
- C. The post can be a positive mitigating force in emergencies. Of all the disasters that befall mankind, war is certainly the worst. The resources of SAME can be an important part of our national preparedness. An effective communications instrument is needed if we are to tap the resources of our engineering/construction industry. It can be a positive force during and after natural disasters or industrial emergencies. The post can help promote readiness both prior to and during emergencies and natural disasters.
- D. The *Operation Fast Start* plan is designed to increase the awareness of local planners, design and construction personnel so they:
1. Understand the mechanisms of contracting for emergency services;
  2. Improve their response time by understanding what they may be required to do and when; and
  3. Assist in responding effectively to the emergencies that may face our nation and region.

In short, it is preparedness for the full range of emergencies: natural, industrial, and defense.

### II. PURPOSE

- A. The purpose of the *Fast Start* plan is to define emergency work requirements, inventory existing regional capabilities, describe capabilities, address significant area deficiencies, make capabilities known to governmental agencies, and address specific opportunities for sustaining member participation in engineering tasks associated with the recovery from natural and man-made disasters/emergencies. *Operation Fast Start* means preparedness for the full range of natural and man-made disasters/emergencies.
- B. *Operation Fast Start* has four initial goals to better posture the engineering/construction assets of the New York City area to respond effectively in a national emergency, natural disaster, or other types of emergencies:
1. Enhance Awareness of Local Planners. Planners should keep emergency services in mind when planning future relief efforts. They should be aware of the tremendous pool of talent that can be made available by SAME's Sustaining Member firms and agencies to the extent of including SAME in the emergency plans.
  2. Improved Response Time by SAME Member Firms. This goal is aimed at sustaining members to help them understand what will be required and when. Coordinating between sustaining members and key response agencies to discuss/reduce common problems will reduce the time required to reorient from emergency response to normal activities.
  3. Improved Flexible Response. Through improved planning, based on awareness and timeliness, increased flexibility will enable our Nation to respond effectively to a range of disasters and emergencies. The worldwide threats to US interests in the decades ahead will be diverse. The requirement for flexibility in planning for any contingency is apparent.
  4. Maximize Use of Existing Capabilities. The construction industry is decentralized, flexible, mobile, and highly elastic to demand. The industry has demonstrated it can respond. Existing capabilities are adequate for nearly any contingency, given proper preparedness.

NYC SAME Post  
FAST START PLAN (060215)

With readiness and rapid response, the effects of a disaster can be further mitigated.

### **III. CIVIL PREPAREDNESS AND READINESS**

By clarifying channels of communications, contracting procedures, and individual responsibilities, the ability of local governments to respond to local emergencies and disasters will be greatly improved.

From time to time, Civil Preparedness exercises are conducted by local, regional, state and federal agencies. Too often these exercises simulate the participation of key elements such as the A&E and contracting entities. Through SAME, more industry participation is possible in order to reach a more advanced state of readiness. The agencies conducting these exercises are encouraged to seek the voluntary participation of SAME member firms and to have SAME representation at various levels of activity. Conversely, we encourage member firms to volunteer their services in these exercises. Through such cooperation we achieve an effective level of preparedness, fulfill the industry's portion of the "partnership" language contained in the National Security Council's Document 47 and directly contribute to the SAME theme, "Dedicated to National Defense."

#### **A. Description of Natural and Man-made Threats Affecting Area Work Effort Requirements**

1. NATURAL DISASTER. The most devastating natural disasters that could occur within the region are hurricane, blizzard, and earthquake. Although the likelihood of a major earthquake in this region is low, the impact could be catastrophic for the area hit. Other emergencies including terrorist attack and chemical or nuclear accidents can also be anticipated.

The Federal Emergency Management Agency estimates, for example, that a major disaster in the NYC area could result in hundreds of deaths and millions of dollars in property damage. Major damage to energy facilities (power plants, oil refineries) is also a possibility, and could result in disruption to energy supplies.

#### **Principal Natural Destructive Events Affecting the Post Area:**

(1) Severe thunderstorms, often accompanied by wind, hail, flooding, and lightning, which can occur in all seasons of the year.

(2) Flooding in the form of flash floods, rising water, or flooding from wind-driven, or wind-held water. Flooding is generally associated with other weather-caused destructive forces.

(3) Droughts and other water shortages, which are particularly damaging to crops and livestock and which can affect entire communities.

(4) Forest and brush fires, which cause annual losses to timber and agricultural interests.

(5) Frost and freezes, which can cause extensive damage and be particularly destructive to winter agricultural.

(6) Hurricanes, the greatest threat and the most likely disaster to cause significant damage in the NYC area and warrant mobilization of the State, Federal and private sectors. The potential for loss of life and property due to hurricane hazards is significant. Storm surge, winds and rain constitute the major destructive forces of a hurricane. Hurricanes are categorized according to the intensity of maximum sustained winds around their center or eye.

(7) Earthquakes as the result of movement of nearby fault lines could cause structural damage to structures (homes, buildings).

NYC SAME Post  
FAST START PLAN (060215)

The type of construction required would range from debris removal, stabilization of damaged structures and emergency restoration of essential services to major reconstruction of all types of facilities, including bridge and road construction, renovation and reconstruction of structures, and restoration of utility systems.

**2. TERRORIST THREAT OR ACTIVITY.** Not as unlikely as once believed (especially since 9/11/01), there are elements within our society that seek to enhance their own goals through sabotage of key buildings, installations and transportation/ communications infrastructure.

The construction industry may be called upon to help recover from these activities. Participation by member firms would be aimed at restoration of essential services, debris removal, damage assessment and reconstruction of public facilities such as roads and bridges, utilities and other structures. Design consideration for new facilities should emphasize, where possible, mitigation of threat. The industry through SAME can also make a contribution in this mitigation effort.

#### **IV. MOBILIZATION READINESS**

A. Prior to full military mobilization and dependent on congressional priorities, there may be a period of construction effort devoted to improving emergency operations centers and protecting infrastructure.

B. During military mobilization, the focus of the nation's defense construction effort will be to first support the mobilization and deployment of both active and reserve component troops and provide construction support to other federal agencies. This support could consist of construction at military installations, to include barracks, warehouses, utilities, waterfront structures, and transportation networks.

C. The primary locations for military construction work will center around existing installations. The facilities in the NYC area include:

1. Active Military Area

Fort Hamilton and the USMA at West Point.

2. Reserve Military and Federal Area

Armed Forces Reserve Centers at Amityville, Bellmore, Bullville, Floyd Bennett Field, Fort Tilden, Fort Totten, Fort Wadsworth, Kingston, Mueller (Bronx), Orangeburg, Patterson (Bronx), Poughkeepsie, Rocky Point, Roosevelt (Hempstead), and Stewart Airfield.

Federal facilities such as 26 Federal Plaza and VA Medical Centers.

#### **V. KEY PROGRAMS**

##### **A. Local Response Plans**

The NYC Office of Emergency Management (COEM). The NYCOEM functions as the principal advisor to the Mayor on disaster preparedness, response and recovery efforts optimizing the city's capabilities by:

1. Assisting city agencies in the performance of their assigned responsibilities through planning emergency response and an Emergency Operations and Communications Center.
2. Coordinating Federal, State, County, City, volunteer and private resources during times of major emergencies and disasters.
3. Pursuing and negotiating cooperative agreements and efforts to pool local public and private resources and contacts.
4. Providing education to the citizens of NYC regarding ways to minimize the personal effects of disasters.

##### **B. State Response Plans.**

NYC SAME Post  
FAST START PLAN (060215)

A regional response plan supplements the Federal Response Plan and provides the link between the state and federal actions. It details the level of response and recovery actions and activities that may be taken by Federal Departments and agencies to support the response effort. The regional response plan should include a memorandum of understanding (MOU) describing working relationships and the provisions to facilitate joint operations.

The state emergency response mission is to provide resources to satisfy unmet local needs and address several operational response functions. These functions focus on the direction and control, warning, emergency public information, and evacuation actions that must be dealt with during initial phase of response operations. The functions fall outside of the Federal response mission and are not appropriate for inclusion in Federal response plans. Additional detail is provided at Appendix E.

STATE OF NEW YORK OFFICE OF EMERGENCY MANAGEMENT (SEMO.) SEMO is organized as an Office in Division of Military and Naval Affairs. It is responsible for preparing and maintaining a state disaster plan and all that it implies. It serves as point of contact and coordinating agency in providing assistance to local officials in designing local emergency action plans. Resource requirements for the state and its political subdivisions are determined by SEMO, and when advisable, it procures essential equipment for augmenting emergency operations. It assists in the establishment and conduct of training programs and public information programs; maintains a register of search and rescue organizations operating within the state and assists them in their training and proficiency standards; and it cooperates with federal agencies and other public or private agencies to the above purposes and in implementing programs for disaster prevention, preparation, response and recovery.

**C. Federal Response Plans.**

1. Concept of the Plan

(1) When disaster - a flood, a chemical spill - threatens a community, local responders, government agencies, and private organizations take action. And most of the time, with the help of the state, they have the skills and equipment to do the job. But sometimes the destruction goes beyond local and state capabilities. That is when the Federal help is needed as well.

(2) The federal process begins when a state governor asks the President of the U.S. for help. The President, with Federal Emergency Response Agency (FEMA) advice, decides to mobilize federal resources. Disaster-stricken areas become eligible for relief when the President declares an emergency or major disaster.

(3) FEMA has the responsibility for, and directs, Federal Disaster Assistance. In coordination with other federal agencies, FEMA developed the Federal Response Plan (hereafter in this chapter referred to as the Plan). It provides the system for delivering Federal assistance to State and local governments when the requirements of emergency response exceed State and local capabilities.

(4) The Plan tells how the Federal government responds to disasters, provides state and local governments with personnel, technical expertise, equipment and other resources, and assumes an active role in managing a response.

2. Summary of the Plan. The Plan is based on the premise that a significant disaster may require a broad spectrum of Federal assistance to immediately support State and local emergency response operations. The Plan establishes a foundation for a systematic, coordinated, and effective Federal response by:

(1) Establishing fundamental assumptions and policies;

(2) Establishing a concept of operations that provides an interagency coordinating mechanism for immediate delivery of Federal assistance;

(3) Incorporating the coordination mechanisms and structure of other appropriate Federal plans and responsibilities into the overall response;



NYC SAME Post  
FAST START PLAN (060215)

- (4) Identifying specific Federal resources to supplement State and local response operations;
- (5) Assigning specific functional responsibilities to appropriate Federal departments and agencies; and
- (6) Identifying actions Federal departments and agencies will take to manage the overall Federal response in coordination with the affected State.

The Plan does not specifically address recovery assistance, such as temporary housing, loans and grants to local and State government entities provided under traditional disaster assistance programs of FEMA and other agencies. However, initial recovery efforts may commence as response activities take place.

3. Federal Organizations:

(1) FEMA coordinates the establishment of policies for mobilization preparedness of Federal Agencies, prepares and maintains the Federal Master Mobilization Plan and guides the states and federal regional councils in their emergency preparedness. The U. S. is divided into ten FEMA regions with 26 Federal Plaza being the headquarters for FEMA Region 2 that covers the states of New York, New Jersey, Puerto Rico and the U.S. Virgin Islands.

(2) New York District, U.S. Army Corps of Engineers (NYDACE) Response Plan- The NYC Post FAST START plan provides for the Post to be subordinate to and under the Command and Control of the NYDUSACE. It is designed to assist the NYDUSACE in carrying out its responsibilities under the Federal Emergency Response Plan (FERP.)

Greater detail on federal organizations and their responsibilities are described at Appendix C.

**VI. CONTRACTING AGENCIES**

A. In NYC the Mayor's Office of Emergency Management can contract through other City agencies for the goods and services needed for an emergency. Their phone number can be found in Appendix B.

B. At the State level the State Office of Emergency Management can obtain needed goods and services through local agencies and by contract through other state agencies. Their phone number can be found in Appendix B.

C. The New York District office of USACE is chartered to provide federal engineering management in emergencies at the local level within the civil sector. The Corps of Engineers is prepared for actions in a broad spectrum of emergency conditions including natural disasters. Fundamental authority covers responsibilities for water resources protection and disaster relief and for civil defense. These missions have one thing in common. The Corps is charged to mitigate loss of life and property in national disasters, whether natural or man-made. The U. S. averages about 30 disasters a year of the size that requires the Corps of Engineers to assist with recovery. But these events do not compare in magnitude to those experienced and postulated in preparation for, conduct of, and recovery from war. They can obtain needed goods and services through their contracting offices. Their phone number can be found in Appendix B.

**VII. THE PROCESS**

To maximize the mitigation capacity of the industry, a doctrine of planning, preparation, and organization must be known and practiced by industry. SAME is the organization best suited to facilitate this process.

**A. REPORTING. As a private contractor, when and to whom do I report availability for work in an emergency?**

A&E firms, contractors, suppliers, and subcontractors can be prepared to accept mobilization direction from the local contracting officer, the USACE District or Division Engineer or the NAVFAC EFD Commander in their local area. To insure timely and effective direction, these agencies need to know your firm's capabilities and assets. Without jeopardizing proprietary information, contractors who wish to accept mobilization work can report their

NYC SAME Post  
FAST START PLAN (060215)

assets, capabilities, and area of availability through the SAME Post. SAME can play a role in educating firms in this process. Each interested firm normally maintains a current inventory of its assets and capabilities. Making this document available to these agencies through this plan will accomplish this purpose. Firms that see themselves playing a major role during mobilization in their locality should plan for that eventuality now. Sustaining members of SAME are being asked to provide this capability information as a part of *Operation Fast Start*, and report their capabilities, as well, on their annual Directory Entry Form for the SAME Directory of Member Firms and agencies.

**B. OPERATIONS. What is the nature of emergency operations?**

Emergencies can run the gamut of situations from blizzards, floods, earthquakes and tornadoes to chemical/nuclear accident, war mobilization and/or nuclear attack. Operations at the peace to emergency interface are discontinuous, and time becomes the most precious resource. Private firms, whether A-E firms, contractors, suppliers, and/or subcontractors, must be able to make adjustments in their operations. New relationships must be established with local, state, regional, and national agencies to determine the response ethic necessary for the private sector to perform its role while averting panic. Again, SAME can act as the facilitator of this process. A partial list of agencies responsible for emergency response is at Appendix D.

**C. PROCEDURES. What types of contracting procedures can be expected during national emergencies?**

The procedures will probably depend on the severity of the emergency and the response time required. The competitive bid process is always desirable. In previous mobilization experiences, the use of cost plus fixed fee contracts was the norm, although not necessarily the most economical. Where competitive bid contracts can be used, history shows they should be used. Where expediency is most important, the cost plus fixed fee contract allows construction to begin before plans and specifications are finalized. It also guarantees that the contractor and A&E firm will be reimbursed for any rapidly rising, unpredictable labor and material costs necessary to perform the task they have been assigned. Standard procedures are established for A&E selection, contractor selection, types of contracts, percentage figures, cost plus fixed fee contracts, and/or different methods of contracting out work to accomplish the mission.

**D. LIABILITY. What relief from liability for ongoing projects can be expected?**

Mechanisms to determine which projects are to be stopped and how, which projects should be continued, and which projects that should be started depend on the magnitude of the mobilization and the nature of the project. The government's mobilization efforts and priorities will be available to the private sector to facilitate private industry's conversion from peacetime work to the mobilization effort. Contractors will be engaged in both government contracts and private contracts, and the rules for relief differ between the two. SAME can assist in this exchange.

**E. DESIGN STANDARDS/STANDARD DESIGNS. What are the design standards for mobilization construction?**

Peacetime standards provide "permanency," whereas emergency standards are often described as "expedient." A combined effort by government, A&E firms, and contractors is necessary to establish standards consistent with good construction practices and with the environment of the area where the district and/or division offices are located. These design standards take into account the manpower, equipment, supplies, and subcontractors available within a mobilization period to perform the necessary construction activities. Mobilization construction, as currently envisioned, will use standard plans and non-critical materials. The objective is to build functional facilities in minimum time. It can be expected that maximum use of "alternatives" to construction will be sought, such as leasing civilian or other government facilities, and converting nonessential military facilities. The design of standard mobilization facilities is in progress, to include all drawings, standard specifications and individual bills of materials. These designs include all drawings. Once the specific construction requirements are established, a complete bill of materials can be compiled. This will allow a quick assessment of suppliers' ability to meet the demand for materials.

**F. MANPOWER AND EQUIPMENT READINESS. How can the private sector enhance its readiness?**

NYC SAME Post  
FAST START PLAN (060215)

Prior planning and analysis is the key to readiness. The change in employee priorities and needs during emergency conditions must be recognized. At these times, people's professional dedication will be tempered with worries about the safety of themselves and their families. A readiness plan must be sensitive to the psychological condition of those charged with its execution. The principals of firms must be prepared to assume a leadership role in restoring order to the disorder that inevitably follows a mobilization or emergency situation. Employees must feel confident of their firm's ability to perform during emergency conditions. Also, emergency relationships with A&Es, subcontractors, and suppliers should be prepared based on specific sectors of emergency work. Finally, the organization should inform the local emergency authorities of its manpower preparedness.

Equipment readiness lists should be established with each firm that has submitted its qualifications and whose expertise will be needed in a mobilization deterrence. Lists for A&E firms should include all types of survey instruments, computers, plotters, and computer software. Contracting and construction firms should list construction equipment, such as road building equipment, cranes, pile driving equipment, and small equipment necessary to perform the mission. All firms must address the equipment available in case of mobilization and keep the list continually updated.

### **VIII. THE FEEDBACK MECHANISM**

Once we as a society of military and civilian engineers think through the probability of disaster and our response capability, important new thoughts, concepts, tactics, equipment, and processes will evolve. These can save precious minutes, lives, and property. It is here that SAME can play the greatest role. The Society must have a vehicle to make this happen -- to provide this feedback. The first step is this Post Plan. The next step is to maintain the plan. You, the individual member, the Sustaining Member, the interested prospect, must provide us continual feedback in the form of questions, concerns, and/or suggestions for improvement, as well as updates of your readiness inventory. Please let us hear from you! Only through your involvement will this plan grow. Only through your involvement will our readiness condition improve.

### **IX. RESOURCES.**

The Society of American Military Engineers, NYC Post, currently has **87** sustaining member firms. These firms are engineering and construction-related businesses in the NYC Area. SAME sustaining member firms' types and extent of resources at their disposal, which might then become available in the event of natural disaster in the area or national military mobilization, are known by the Board members assigned areas of expertise.

### **IX. RESOURCES. (Continued)**

Other firms in the area are also being asked to participate in this information gathering effort and to join us either as sustaining member firms or as individual members. Membership application forms are available on the web at [www.same.org](http://www.same.org). It is our intent to use this plan to help recruit additional members and in the process expand the resources available in time of emergencies through *Operation Fast Start*.

Appendix A is the NYC Post "Sustaining Members" downloaded from [www.same.org](http://www.same.org).

Appendix B is a summary of the Federal, State and Local Agencies that can be involved in emergencies of various natures.

Appendix C describes the federal agency responsibilities.

Appendix D captures the New York State emergency response plan.

Appendix E captures the local emergency response plans

NYC SAME Post  
FAST START PLAN (060215)

Appendix F describes the NYC Post Readiness Plan and includes the Post phone tree and Members responsible for identification of resources for the identified tasks.

Appendix G identifies the distribution of this plan.

Appendix H contains References

NYC SAME Post  
FAST START PLAN (060215)

**APPENDIX A**  
**SUSTAINING MEMBER FIRMS- downloaded from www.same.org**

NAME	WPHONE	PRI_REP	ALT_REP
AKRF Inc.	(212)696-0670	Mr. Robert F. Conway	Mr. George Penesis
AMEC	(732)302-9500	Mr. Jeffrey J. Tasca	Mr. Charles R. Harman
Ammann & Whitney	(212)462-8500	Mr. Nick Ivanoff P.E.	Mr. Bal K. Cherwoo P.E.
Arup	(212)897-1305	Mr. David T. Palmer P.E.	Mr. Jonathan Drescher
Battelle Stoney Brook Operations	(631)941-3211	Mr. Tom Gulbransen	Ms. Erika Schaub
Berger Lehman Associates	(914)967-5800	Mr. Lawrence H. Lehman	Mr. Joseph Izzo
Brinkerhoff Environmental Services Inc.	(732)223-2225	Ms. Laura A. Brinkerhoff	
Carter & Burgess Inc.	(212)354-3675	Mr. Michael Giaramita	Mr. Eric Pawlowski
CDM	(212)785-9123	Mr. Robert D. Goltz	Mr. Demetrios Klerides
CH2M HILL	(201)316-9300	Mr. Paul Malmrose	Mr. Robert Beinstein
Chas. H. Sells Inc.	(914)747-1120	Mr. Steven W. Smith P.E.	Ms. Susan Fasnacht P.E.
Clough Harbour & Associates	(973)299-1100	Mr. Gary W. Robinson P.E.	Mr. Peter Conway
Conti Environmental Inc.	(908)791-4800	Mr. Jay Price	
Cooper Union	(212)353-4285	Ms. Eleanor Baum	
DeMatteis International Equipment	(631)957-8800	Mr. Alfonso L. DeMatteis	Mr. Lowell E. Peterson P.E.
Dewberry-Goodkind Inc.	(212)685-0900	Mr. Keith Itzler P.E.	Mr. Orlando Miguel Jr P.E.
DMA Inc.	(703)255-1300	Mr. David J. Miller	Mr. Vinicio Vannicola Jr.
DMJM	(212)983-2400	Ms. Eileen F. Schulman	Mr. Raffie Samach
DMJM + HARRIS	(212)973-3014	Mr. Edward J. Schmeltz	Mr. Gary Morris
EA Engineering Science and Technology	(845)565-8100	Mr. Chip McLeod	Mr. Paul Muessig
Earth Tech Inc.	(212)798-8648	Mr. Joseph Fiteni Jr. P.E.	Mr. William J. Bekemeier
Earthworks LLC	(203)270-8100	Mr. William F. Murphy	Ms. Beckett Boyd
ECC	(973)338-7011	Mr. Marc Mizrahi	Mr. Robert Paine III
Edwards and Kelcey	(212)944-2000	Mr. Martin H. Kendall P.E.	Mr. Richard E. Tangel P.E.
Engineering Devices Corp.	(201)641-2880	Mr. Antonio S. Limbardo	Mr. Anthony D. Limbardo
Ensign Engineering P.C.	(718)863-5590	LCDR Regina G. Marengo	Mr. Carl J. Cannizzaro

NYC SAME Post  
FAST START PLAN (060215)

Erdman Anthony & Associates Inc.	(585)427-8888	Mr. Jeffrey C. Lookup P.E.	Mr. Anthony B. Felder
Field Associates PC	(516)378-2794	Mr. Leopold M. Field P.E.	Mr. David Frank
Foit-Albert Associates	(716)856-3933	Mr. Donald Skowron	
FPM Group	(631)737-6200	Dr. Kevin J. Phillips	Mr. Gary A. Molnar Ph.D.
Gannett Fleming Engineers and Architects PC	(212)967-9833	Mr. Charles R. Norrish III	Mr. John Purdy
Gannett Fleming Inc	(516)671-8440	Mr. Robert E. Adamski PE	Mr. Fotios Papamichael P.E.
GEOD Corp.	(973)697-2122	Mr. John F. Emilius	Mr. Stanley B. Palinski
Goldman Copeland Associates	(212)868-4660	Mr. Martin J. Goldman P.E.	Mr. Howard R. Holowitz
Goshow Architects LLP	(212)242-3735	Ms. Nancy Aber Goshow	Mr. F. Eric Goshow
Granite Construction Company Inc.	(914)668-9500	Mr. Robert W. Leonetti	Mr. Eugene Kelley
HAGER-RICHTER GEOSCIENCE INC.	(973)676-3001	Ms. Dorothy A. Richter	Mr. James Coffman
HAKS Engineers and Land Surveyors	(212)747-1997	Mr. Husam Ahmad P.E.	Mr. Jerome Liebowitz P.E.
Halcrow LLC.	(212)608-4963	Ms. Helga Junold	Mr. Leslie G. Buck
Hardesty & Hanover LLP	(212)944-1150	Mr. Charles J. Gozdziwski	Mr. Paul Skelton
Hatch Mott MacDonald	(212)532-4111	Mr. Lee Abramson	Mr. David Sikorski
Hirani Engineering & Land Surveying PC	(732)564-0164	Dr. B.V. Rao PhD.	Mr. Jitendra Hirani P.E.
HNTB	(973)237-1650	Mr. A. William Rutherford P	Mr. Tom Hicks
HPA LLP	(212)608-3990	Mr. Dennis V. Padron P.E.	Mr. Jonathan L. Goldstick P.E.
HydroQual Inc.	(201)529-5151	Mr. Kevin D. Keane	Mr. Phil Simmons
JACOBS	(212)481-9460	Mr. Vincent A. Mangiere	Mr. Michael Rennard P.E.
Jenny Engineering Corporation	(973)379-6699	Mr. Robert J. Jenny P.E.	Mr. Prakash M. Donde
Lichtenstein Consulting Engineers	(212)244-1600	Mr. Charles M. Minervino P	Mr. Arthur Wolek P.E.
Liro-Kassner Inc.	(516)938-5476	Mr. Harvey S. Sands	Mr. Charles F. Guardia Jr. P.E.
LZA Associates/Thornton-Tomasetti Grp	(917)661-7800	Mr. Joel S. Weinstein P.E.	Mr. Richard L. Tomasetti P.E.
Maitra Associates	(212)868-4848	Mr. Chandhi Maitra P.E.	Mr. David Ridgway P.E.
Malcolm Pirnie Inc	(914)694-2100	Mr. Gregory P. Matthews	Mr. Edward A. Dudek P.E.
ManTech Security Technologies Corp.	(212)201-6776	Mr. Joseph M. Morris	
McGraw-Hill Companies	(212)904-3722	Mr. James H. McGraw IV	Ms. Janice L. Tuchman

NYC SAME Post  
FAST START PLAN (060215)

Metcalf & Eddy Inc	(212)984-7386	Mr. James Anderson	Mr. Bohdaw Bodniewicz
Baker Engineering NY Inc.	(914)333-5300	Mr. Robert G. Hoffman	Mr. Martin Fronius
MTA New York City Transit	(646)252-3833	Mr. Angelo Tomasetti Jr.	Mr. Mysore Nagaraja P.E.
Mueser Rutledge Consult Engrs	(917)339-9300	Mr. Hugh S. Lacy P.E.	Mr. Francis J. Arland P.E.
New Jersey Turnpike Authority	(732)442-8600	Mr. Richard J. Raczynski P.	Mr. Michael Garofalo
NYC School Constr Authority	(718)472-8493	Mr. William Goldstein	Mr. Steven W. Lawitts
P. W. Grosser Consulting Inc.	(631)589-6353	Mr. Gary Mazza	Mr. Drew E. Dillingham P.E.
Parsons Brinckerhoff	(212)465-5000	Ms. Judith Cooper	Mr. Gregory A. Kelly
PBS&J	(703)535-3008	Ms. Sandra A. Gitlin-Muir	Mr. Michael G. Pavlides
Polytechnic University	(718)260-3713	Professor F.H. (Bud) Griffis	Professor Lawrence Chiarelli
Postner & Rubin	(212)269-2510	Mr. Robert A. Rubin	Ms. Dana Wordes P.E.
Rolf Jensen & Associates Inc	(212)695-6670	Mr. Joseph Razza P.E.	Mr. Mike Nicoletta
SBLM Architects PC	(212)995-5600	CDR C. William Eilers Jr.	Mr. John Kelly
Shaw Environmental & Infrastructure Inc	(212)290-6023	Joseph Porrovecchio (Ret)	Mr. Kevin Donnelly P.E.
Spearin Preston & Burrows Inc.	(718)720-8029	Mr. Daniel A. Betancourt	Mr. John Eckart
Stantec Consulting Services Inc.	(631)424-8600	Mr. Andrew Curry P.E.	Mr. Mark Lang P.E.
STV Incorporated	(212)777-4400	Mr. Maher Z. Labib P.E.	Mr. Michael S. Della Rocca P.E.
Syska Hennessy Group	(212)556-3364	Mr. John V. Magliano P.E.	Mr. David Callan
T Moriarty And Son Inc	(718)858-4800	Mr. James P. Moriarty	Mr. James Moriarty Jr.
Tetra Tech	(973)630-8411	Mr. Kevin M. Fitzgerald	Mr. Martin S. Brown
The Louis Berger Group Inc.	(973)765-1800	Mr. Gul Khan	Mr. Thomas G. Lewis P.E. JD
Urbahn Associates Inc.	(212)239-0220	Mr. Martin D. Stein AIA	Mr. Natale V. Barranco
URS Corporation	(212)736-4444	Mr. Albert J. Bast III P.E.	Mr. Michael Burton P.E.
US Army Corps of Engineers NY District	(917)791-8574	SAME - Principal Rep	SAME - Alt. Rep #1 (PM)
US Army Corps of Engineers North Atlantic Division	(718)765-7005	USACE NAD #1	USACE NAD #2
Vollmer Associates LLP	(212)366-5600	Mr. Stuart E. Lerner	Mr. Kenneth J. Stigner
Washington Group International	(212)268-2770	Mr. Robert Harvey	Mr. Edmond Chalom
Weeks Marine Inc.	(908)272-4010	Mr. Gary A. Platt	Mr. Richard D. MacDonald

NYC SAME Post  
FAST START PLAN (060215)

Weidlinger Associates	(212)367-2978	Ms. Marcy Stanley	Mr. Thomas J. Rittenhouse III
WESTON Solutions Inc.	(732)417-5800	Mr. Mark Jaworski	Mr. Paul O'Connor
Zetlin & De Chiara LLP	(212)682-6800	Ms. Stephanie L. Maher	Mr. Michael K. De Chiara
ZNC International Inc.	(203)324-0003	Mr. Charles Zimmerman	Ms. Nanda Zimmerman



NYC SAME Post  
FAST START PLAN (060215)

**APPENDIX B**

**AGENCY LISTING**

**FEDERAL AGENCIES (www.whitehouse.gov/government)**

Federal Emergency Management Agency (FEMA)(www.fema.gov) Region 2	212 225 7209
Department of Energy	202 586 5000
Department of Homeland Security (www.dhs.gov)	
Department of Housing and Urban Development	212 264 8000
Department of Interior- National Park Service	718 338 3575
Department of Labor- OSHA	212 337 2378
Department of Transportation- Federal Highway Administration	202 366 0650
Environmental Protection Agency (www.epa.gov)	212 637 5000
Federal Aviation Administration	718 553 3015
New York District Corps of Engineers	212 264 0100
U.S. Coast Guard	718 354 4001
Public Health Service	212 264 2561
Veterans Administration Medical Centers	718 836 6600

**NEW YORK STATE (www.state.ny.us)**

New York State Emergency Management Office (SEMO)	518 457 2200
Dept. of Environmental Conservation (DEC)	800 457 7362
Department of Health (DOH)	866 881 2809
Department of Transportation (DOT)	518 457 6195

**LOCAL COUNTIES**

Dutchess (www.co.dutchess.ny.us)	845 486 2000
Nassau (www.co.nassau.ny.us)	516 571 3131
Orange (www.co.orange.ny.us)	845 291 2700
Rockland (www.co.rockland.ny.us)	845 638 5122
Suffolk (www.co.suffolk.ny.us)	631 853 4000
Westchester (www.westchestergov.com)	914 995 TELE

**NEW YORK CITY (www.nyc.gov)**

New York City Office of Emergency Management (NYCOEM)	718 422 4800
NYC Dept. of Design & Construction (DDC)	718 391 1000
NYC Dept. of Environmental Protection (DEP)	311
NYC Dept. of Health (DOH)	212 213 1844
NYC Department of Transportation (DOT)	311
NYC Police Department (NYPD)	911
NYC Fire Department (FDNY)	911

**OTHER AGENCIES:**

Port Authority of NY & NJ (www.panynj.gov)	212 435 7000
Red Cross (www.redcross.org)	212 787 1000
Salvation Army (www.salvationarmy.usa.org)	212 337 7200

**APPENDIX C**

**FEDERAL AGENCY RESPONSIBILITIES**

1. The following Federal departments and agencies agree to support the overall concept of the Plan and to carry out their assigned functional responsibilities. They also agree to implement national and regional planning efforts and exercise activities in order to maintain the overall Federal response capability:

Department of Agriculture  
Department of Commerce  
Department of Defense  
Department of Education  
Department of Energy  
Department of Health and Human Services  
Department of Homeland Security  
Department of Housing and Urban Development  
Department of the Interior  
Department of Justice  
Department of Labor  
Department of State  
Department of Transportation  
Department of Treasury  
Department of Veterans Affairs  
American Red Cross  
Environmental Protection Agency  
Federal Communications Commission  
Federal Emergency Management Agency  
General Services Administration  
Interstate Commerce Commission  
National Aeronautical and Space Administration  
National Communications System  
Nuclear Regulatory Commission  
Office of Foreign Disaster Assistance  
Office of Personnel Management  
U.S. Army Corps of Engineers  
U.S. Postal Service  
Small Business Administration

2. **ASSIGNMENT OF RESPONSIBILITIES.** To facilitate the provisions of Federal assistance, the Plan uses a functional approach to group the types of Federal assistance, which the State is most likely to need under 12 Emergency Support Functions (ESFs). The 12 ESFs serve as the primary mechanism under which Federal response assistance will be provided to assist the State in rendering assistance to the affected area. Each ESF is headed by a primary or lead Federal agency, with other agencies providing support as necessary to carry out the function. Primary agencies have been assigned on the basis of having the most resources and capabilities in the particular functional area.

ESF #1. The Department of Transportation has primary responsibility for ESF #1, which is to provide for the coordination of Federal transportation support to State and local governmental entities, voluntary organizations, and Federal agencies requiring transportation capacity to perform disaster assistance missions following a catastrophic earthquake, significant natural disaster, or other event requiring Federal response.

**APPENDIX C -FEDERAL AGENCY RESPONSIBILITIES (Cont.)**

ESF #2. The National Communications System has primary responsibility for ESF #2, which is to assure the provision of Federal telecommunications support to Federal, State, and local response efforts following a Presidential declared emergency, major disaster, extraordinary situation and other emergencies under the Federal Response Plan. This ESF supplements the provisions of the National Plan for Telecommunications Support in Non-Wartime Emergencies.

ESF #3. The Department of Defense has delegated responsibility to the U.S. Army Corps of Engineers for ESF #3, which is to provide Public Works and Engineering support to assist the State(s) in needs related to lifesaving or life protecting following a major or catastrophic disaster.

ESF #4. The U.S. Department of Agriculture has primary responsibility for ESF #4, which is to detect and suppress wild land, rural, and urban fires resulting from, or occurring coincidentally with, a catastrophic earthquake, significant natural disaster or other event requiring Federal response assistance.

ESF #5. The Federal Emergency Management Agency has primary responsibility for ESF #5, which is to collect, process and disseminate information about a potential or actual disaster or emergency to facilitate the overall activities of the Federal government in providing response assistance to an affected State.

ESF #6. The American Red Cross has primary responsibility for ESF #6, which is to coordinate efforts to provide sheltering, feeding, and emergency first aid following a catastrophic earthquake, significant natural disaster or other event requiring Federal response assistance; to operate a Disaster Welfare Information System to collect, receive, and report information about the status of victims and assist with family reunification within the disaster area; and to coordinate bulk distribution of emergency relief supplies to disaster victims following a disaster. Also see chapter 6, Local Programs.

ESF #7. The General Services Administration has primary responsibility for ESF #7, which is to provide logistical/resource support following a catastrophic earthquake, other significant natural disaster, or other event requiring Federal response.

ESF #8. The Department of Health and Human Services, U.S. Public Health Service, has primary responsibility for ESF #8, which is to provide U.S. Government coordinated assistance to supplement State and local resources in response to public health and medical care needs following a significant natural disaster or man-made event. Assistance provided under this ESF is directed by the Department of Health and Human Services through its executive agent, the Assistant Secretary of Health, who heads the U.S. Public Health Service (USPHS). Resources will be furnished when State and local resources are overwhelmed and medical and/or public health assistance is requested from the Federal government.

ESF #9. The Department of Defense has primary responsibility for ESF #9, which is to describe the use of Federal Urban Search and Rescue (US&R) assets following an event requiring a Federal response. The scope of US&R activities includes locating, extricating and providing for the immediate medical treatment of victims trapped in collapsed structures.

ESF #10. The Environmental Protection Agency has primary responsibility for ESF #10, which is to provide Federal support to State and local governments in response to an actual or potential discharge and/or release of hazardous material following a catastrophic earthquake or other catastrophic disaster.

ESF #11. The U.S. Department of Agriculture has primary responsibility for ESF #11, which is to identify, secure, and arrange for the transportation of food assistance to affected areas following a major disaster or emergency or other event requiring Federal response.

ESF #12. The Department of Energy has primary responsibility for ESF #12, which is to help restore the Nation's energy systems following a catastrophic earthquake, natural disaster, or other significant event requiring Federal response assistance. Power and fuel are critical to saving lives and protecting health, safety, and property, and also enable other emergency support functions to respond more effectively.

**APPENDIX D  
NEW YORK STATE RESPONSE PLAN**

**The State of New York is responsible for:**

a. Coordinating disaster assistance:

- (1) of an inter-jurisdictional nature.
- (2) where there is a disaster of actual or potential statewide impact.
- (3) when disaster declarations are to be obtained for Federal assistance for the affected locality.

b. Monitoring the National Warning System. Upon receipt of a warning from the National Weather Service, the New York State Emergency Management Agency (SEMA) will disseminate this information to appropriate State agencies and to concerned areas within the State.

c. Providing the resources necessary to undertake post-disaster hazard mitigation plans and studies as a condition for receipt of Federal assistance under a Presidential declared disaster situation.

d. Providing emergency response on properties owned or controlled by the State.

e. Developing, in conjunction with appropriate regional and local agencies, policies to avoid or reduce natural disaster potential and coordinate the development of continuing hazard mitigation programs.

f. Establishing procedures for training and making pertinent personnel and equipment available in time of emergency.

g. Military Assistance:

(1) Southeast New York is vulnerable to a wide range of peacetime emergencies including hurricanes, floods, earthquakes, hazardous material spills, extended droughts, and civil disturbances. The occurrence of a major peacetime emergency could require resources not available to local governments to ease the effects of the emergency.

(2) The Governor can activate the National Guard to provide services and resources necessary to protect public health and safety in a peacetime emergency and restore the affected area.

(3) Requests by local civil defense/emergency management organizations for military support will be made through normal emergency management channels to GEMA. Exception may be made to this procedure when warranted.

(4) Military resources could be requested to assist civil authorities in the following possible situations:

(a) Peacetime emergencies of such severity that public or private resources are not adequate to ensure the safety and economic well-being of the persons in the affected area.

(b) Labor stoppages that could prevent the manufacture and delivery of essential supplies.

(c) Emergency clearance of debris and rubble from streets, highways, rail centers, dock facilities, airports, shelters, and other areas, as necessary, to permit rescue or movement of people, access to, and recovery of vital resources.

(d) Emergency repair or reconstruction of facilities.

(e) Rescue, evacuation, and first aid treatment of casualties.

**APPENDIX D - NEW YORK STATE RESPONSE PLAN (Con't.)**

NYC SAME Post  
FAST START PLAN (060215)

(f) Recovery, collection, safeguarding, and issuance of food and essential supplies.

(g) Restoration of facilities and utilities, including transportation, communications, power, fuel, water, and other essential facilities.

(h) Explosive ordnance disposal.

(i) Medical treatment or temporary hospitalization of casualties, recovery of critical medical supplies, and the safeguarding of public health. This may include sorting and treatment of casualties and preventive measures to control the spread of infectious diseases.

(j) Recovery, identification, registration, and disposition of decedents.

(k) Radiation monitoring and decontamination to include identifying contaminated areas.

(l) Movement control to include plans and procedures for essential movements.

(m) Emergency provisions of food and facilities for food preparation.

(n) Damage assessment of facilities, utilities, and communications.

(o) Provision of interim communications using available mobile equipment to provide command and control.

(p) Fire fighting.

(5) Military support to civil authorities in the use of personnel, materials, facilities, and other resources will be activated to overcome the effects of a peacetime emergency situation. Military support will supplement and not be a substitute for civil participation in peacetime emergency operations. Civil resources will be used primarily to support civil requirements, with military resources being used only as necessary to supplement civil authorities. Military forces engaged in local Government support activities may be withdrawn in the event it is necessary to employ such forces in the conduct of military operations or when they are no longer required for peacetime emergency missions.

(6) When the National Guard is activated, it is necessary that decision-makers understand the limitations placed on this State organization and its mission. The National Guard is activated by approval of the Governor through an Executive Order for the purpose of providing security and safeguarding life and property; it cannot be used for offensive or counter-force measures unless specifically approved by the Governor. The National Guard should maintain unit integrity if possible. However, individual units, consisting of specific numbers of personnel and specific amounts and types of equipment, can be mobilized to fit a specific mission. Unity of command should be maintained whenever possible to control the mobilized units and individuals to carry out assigned missions.

NYC SAME Post  
FAST START PLAN (060215)

**APPENDIX E**

**LOCAL RESPONSE PLANS**

Local Governments will be prepared to:

- a. Direct and control local response to emergencies in accordance with State and local laws and mutual aid agreements with adjacent communities, special districts, and voluntary organizations.
- b. Provide immediate response through local police, fire departments, and public agencies located in the vicinity of the emergency.
- c. Establish readiness procedures that ensure proper training, notification of personnel, and availability of needed personnel and equipment in time of emergency.
- d. Request activation of mutual aid agreements when specific aid is required.
- e. Request assistance from State and Federal governments through SEMO when:
  - (1) Local resources are fully committed and found to be inadequate to respond to the situation.
  - (2) A particular capability is required and not otherwise available.
- f. Participate in Federal and State efforts to accomplish post-disaster hazard mitigation plans and studies, as required by Federal regulations when Federal loans and grants are made available to the jurisdiction under a Presidential disaster declaration.
- g. Provide training to personnel with disaster related responsibilities and conduct annual exercises of local disaster response plans. GEMA assists in the development of exercises at the local level upon request. The goal of emergency preparedness training at all levels is the preparation of individuals and organizations for effective and coordinated response to emergencies and in order to minimize the loss of human life and property in the event of a natural disaster.

The American Red Cross independently provides mass care to all disaster victims as part of a broad program of disaster relief. It also assumes primary agency responsibility, under the Federal Response Plan, to coordinate Federal response assistance to the mass care response of State and local governments and the efforts of other voluntary agencies, including ARC relief operations.

**APPENDIX F**

**SAME NYC POST READINESS PLAN**

**CONCEPT:** To provide a plan for the NYC Post resources to be utilized in the event of a national or local emergency or natural disaster.

It parallels and supports the National Response Plan (NRP) developed in accordance with the Stafford Disaster Relief and Emergency Assistance Act

The NRP describes the mechanism and structure by which the federal government mobilizes resources and conducts activities to address the consequences of any major disaster or emergency that overwhelms the capabilities of state and local governments. Federal assistance is available under the Stafford Act, as well as individual agency authorities, to save lives; protect public health, safety, and property; alleviate damage and hardship; and reduce future vulnerability. The NRP is a signed agreement among 27 federal departments and agencies, including the American Red Cross. The NRP organizes the types of federal response assistance that a state is most likely to need under 12 Emergency Support Functions (ESFs), each of which has a designated primary agency.

**ESF 3- Public Works & Engineering has the Department of Defense (DO) as the primary agency. DOD has designated the U.S. Army Corps of Engineers (USACE) as its operating agent for this ESP's planning, preparedness, response, and recovery. The SAME Post will support this ESP.**

Typical USACE ESF#3 Missions include:

- Emergency clearance and removal of debris
- Emergency contracting for humanitarian support (i.e., Ice and Water)
- Temporary housing
- Temporary roofing
- Temporary construction of access routes
- Emergency restoration of critical public facilities
- Demolition and/or stabilization of structures
- Technical assistance
- Damage survey reports

**The Post will be prepared to support other ESFs as follows:**

**ESF 1 (Transportation)** – provide support in the emergency operation of airports and inland waterways, ports, and harbors. Assist in restoring transportation infrastructure.

**ESF 6 (Mass Care)** – Provide potable water and ice for mass care and bulk distribution to disaster victims. Provide assistance in inspecting mass care shelter sites after the disaster to ensure suitability of facilities to safely shelter disaster victims. Provide assistance in constructing temporary shelter facilities, if necessary, in the disaster area.

**ESF 8 (Public Health & Medical Services)** – Provide technical assistance, equipment, and supplies in support of Health and Human Services to accomplish temporary restoration of damaged public utilities affecting public health.

**ESF 9 (Urban Search & Rescue)** – Provide trained Structures Specialists and System to Locate Survivors (STOLS) teams to supplement resources of Urban Search and Rescue (USAR) task forces and Incident Support Teams (ISTs). Provide pre-disaster training for USAR task forces and IST Structure Specialists.

**ESF 10 (Oil and Hazardous Materials Response)** - Provide support in response to an actual or potential discharge and/or release hazardous material following a catastrophic event.

**ESF 12 (Energy)** – Coordinate emergency power team taskings with power-system restoration activities to assist in setting priorities, and ensure that time and resources are not wasted in providing support to a facility that is about to have its power restored.

**ESF 14 (Long-term Community Recovery and Mitigation)** – Provides support to State, regional, local, tribal, nongovernmental organizations (NGOs) and the private sector to enable community recovery from the long-term consequences of an Incident of National Significance.

NYC SAME Post  
FAST START PLAN (060215)

**PLAN:** All requests for assistance will come to the Post President, VP or Secretary who will notify the Readiness and Homeland Security Committee Chair (RHSCC) or Vice Chair. Based on the mission, the RHSCC will notify the Post Responder with the expertise needed. That Responder will keep a list of members and firms available and will notify the number needed for the mission. Requests for assistance can come from the NYD, other federal agencies, state agencies, NYC, or nearby counties or towns. Post Responders will be setup with expertise as follows:

- ESF #1 - Transportation**
- ESF #3 - Public Works**
- ESF #6 - Mass Care, Housing**
- ESF #8 - Public Health**
- ESF #9 - Urban Search and Rescue**
- ESF #10 - Oil and Haz Mat**
- ESF #12 - Energy**
- ESF #14 - Long-term Community Recovery**

**EXECUTION:** The NYC Post will:

- Maintain an inventory of Post members' specialties for assignment to this plan. Maintain an up to date roster of Board members and members telephone numbers. Test the notification of Responders annually.
- Participate in the readiness exercise of the parties listed.
- Brief members on the plan and their responsibilities at one meeting a year

The NYD will:

- Keep the NYC Post informed of changes to the FRP and ESFs
- Invite the NYC Post to participate in their readiness exercise.
- Inform other agencies of this plan and its execution through the NYD.

Other parties will:

- Keep the Post informed of their Point of Contact
- Invite the Post to participate in their readiness exercises.

**Attachments:**

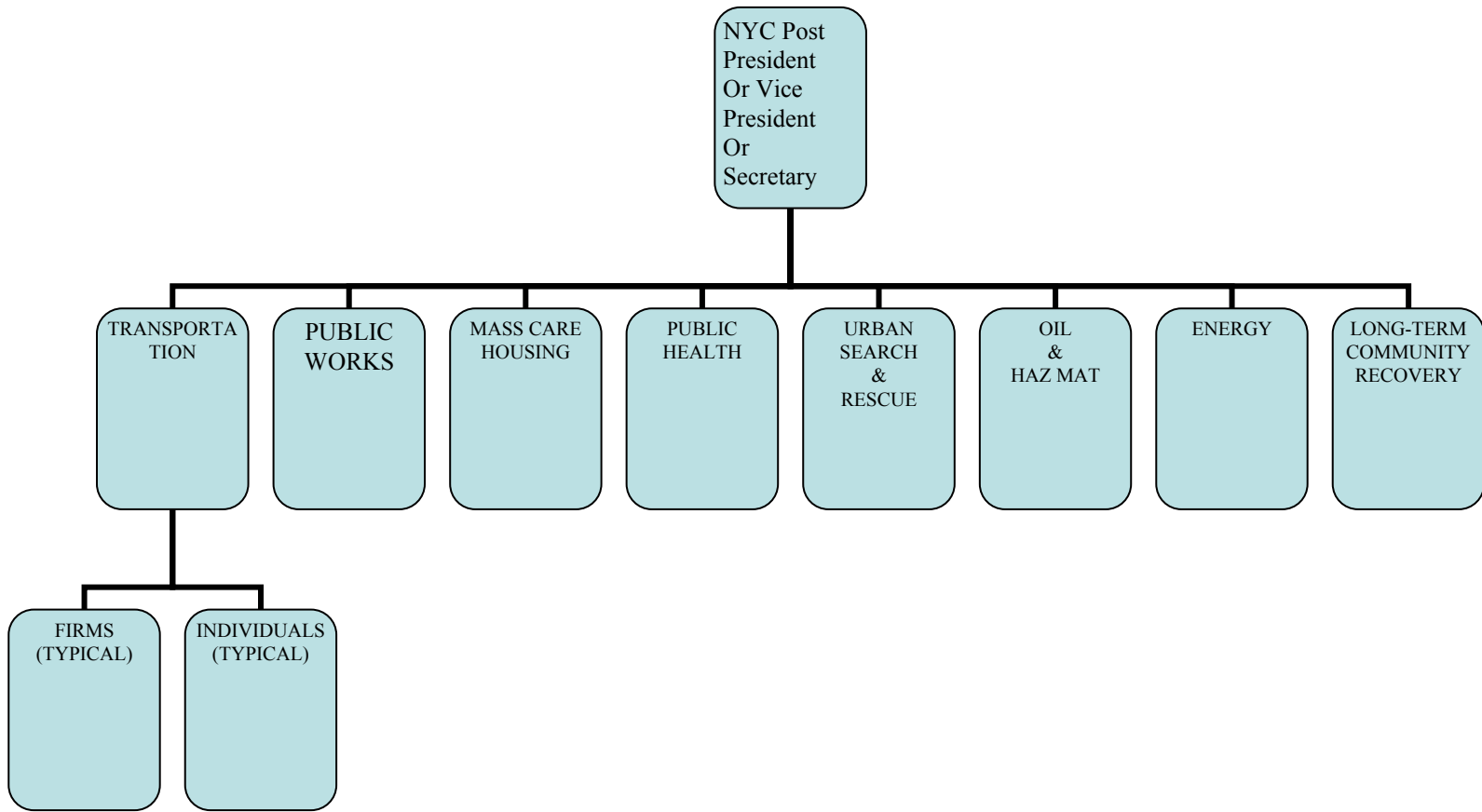
- Readiness Plan Diagram
- Phone Tree
- Sustaining Firms and Post Contacts- Appendix C



NYC SAME Post  
FAST START PLAN (060215)

**APPENDIX F - SAME NYC POST READINESS PLAN (Cont.)**

**NYC POST READINESS DIAGRAM**



**NYC POST PHONE TREE**

President: COL Richard J Polo Jr,  
NY District  
Office 917 790 8000  
Email richard.polo@nan02.usace.army.mil

Vice President (Mil.): LTC Charles Klinge  
NY District  
Office 917 790 8000  
Email charles.klinge@nan02.usace.army.mil

Vice President (Civ.): Judy Cooper  
PB  
Office 212 465 5332  
Email cooperj@pbworld.com

Secretary: Michael Scarano  
North Atlantic Division  
Office 718 765 7112 212 637 4222  
Email Michael.scarano@nad02.usace.army.mil

NYC SAME Post  
FAST START PLAN (060215)

**APPENDIX F - SAME NYC POST READINESS PLAN (Cont.)**

**Readiness & Homeland Security Committee**

Chair: Robert E. Adamski  
Gannett Fleming  
Office 516 671 8440  
Email radamski@gfnet.com

Vice-Chair: Harvey Sands,  
Liro  
Office 516 938 5476  
Email sandsh@liro.com

**ESF #1 (TRANSPORTATION):**

Mitch Becker  
PBS&J  
Office  
Email mwbecker@pbsj.com

VACANT

Office  
Email

**ESF #3 (PUBLIC WORKS & ENGINEERING)**

Steve Vianelli  
NYC SCA  
Office 917 339 9313  
Email svianelli@nysca.org

Frank Arland  
Mueser Rutledge  
Office 917 339 9313  
Email farland@mrce.com

**ESF #6 (MASS CARE, HOUSING):**

VACANT

Joe Porrocchio  
Shaw Environmental  
Office 212 290 6023  
Email prv@shawgrp.com

Office  
Email

**ESF #8 (PUBLIC HEALTH & MEDICAL SERVICES):**

VACANT

VACANT

Office  
Email

Office  
Email

**ESF #9 (URBAN SEARCH & RESCUE):**

Harvey Sands  
Liro  
Office 516 938 5476  
Email sandsh@liro.com

Joe Porrovecchio  
Shaw Environmental  
Office 212 290 6023  
Email prv@shawgrp.com

**ESF #10 (OIL AND HAZARDOUS MATERIALS RESPONSE)**

Mitch Baker  
PBS&J  
Office  
Email mwbecker@pbsj.com

Joe Porrovecchio  
Shaw Environmental  
Office 212 290 6023  
Email prv@shawgrp.com

**ESF #12 (ENERGY):**

VACANT

VACANT

Office  
Email

Office  
Email

**ESF #14 (LONG-TERM COMMUNITY RECOVERY AND MITIGATION):**

VACANT

Joe Porrovecchio  
Shaw Environmental  
Office 212 290 6023  
Email prv@shawgrp.com

Office  
Email

NYC SAME Post  
FAST START PLAN (060215)

**APPENDIX G**

**DISTRIBUTION**

SOCIETY OF AMERICAN MILITARY ENGINEERS

Chair, National Readiness and Homeland Security Committee	1	
North East Region Vice President	1	
NYC Post President	1	
NJ Post President	1	
NYC Post Board Members	17	
NYC Post RHS Committee Members	<u>7</u>	28

US ARMY

Director of Engineering, Ft. Hamilton	1	
Commander, North Atlantic Division	1	
New York District Engineer	1	
Director of Engineering, United States Military Academy	1	
Engineer, 77 U.S. Army Reserve Readiness Command	<u>1</u>	5

OTHER FEDERAL AGENCIES

Federal Emergency Management Agency	1	
US Public Health Service	1	
VA Centers	<u>3</u>	5

STATE AGENCIES

NYS Emergency Management Office	1	
Department of Military and Naval Affairs - National Guard	1	
NYS Department of Environmental Conservation	<u>1</u>	3

CITY AGENCIES

NYC Office of Emergency Management	<u>1</u>	1
------------------------------------	----------	---

LOCAL INTERESTED PARTIES

Port Authority of NY & NJ	1	
County Executives	5	
NYC General Contractors Association	1	
Consulting Engineers Council of New York	<u>1</u>	8

TOTAL DISTRIBUTION 51

NYC SAME Post  
FAST START PLAN (060215)

**APPENDIX H**

**REFERENCES**

1. FEMA Emergency Management Guide for Business & Industry, FEMA 141, October 1993. ([www.fema.gov](http://www.fema.gov))
2. FEMA Guide for All-Hazard Emergency Operations Planning, State and Local Guide (SLG) 101, September 1996 ([www.fema.gov](http://www.fema.gov))
3. National League of Cities Homeland Security: Federal Resources for Local Governments ([www.nlc.org](http://www.nlc.org))
4. SEER Plan Manual (Structural Engineers Emergency Response Plan), National Council of Structural Engineers Associations ([www.ncsea.com](http://www.ncsea.com))
5. Web Sites:
  - a. See Appendix B
  - b. American Water Works Association: [www.awwa.org](http://www.awwa.org)
  - c. Centers for Disease Control and Prevention, Bioterrorism & Response: [www.bt.cdc.gov](http://www.bt.cdc.gov)
  - d. Department of Justice, Office of Justice Programs, Office of State and Local Domestic Preparedness Support (OSLDPS): [www.ojp.usdoj.gov/osldps](http://www.ojp.usdoj.gov/osldps)
  - e. Disaster Help: [www.disasterhelp.gov](http://www.disasterhelp.gov)
  - f. Federal Bureau of Investigation: [www.fbi.gov](http://www.fbi.gov)
  - g. Infraguard: [www.infraguard.net](http://www.infraguard.net)
  - h. Local Emergency Planning Committees: [www.epa.gov/ceppo/lepclist.htm](http://www.epa.gov/ceppo/lepclist.htm)
  - i. National Domestic Preparedness Office: [www.ndpo.gov](http://www.ndpo.gov)
  - j. National Infrastructure Protection Center: [www.nipcc.gov](http://www.nipcc.gov)
  - k. USEPA Emergency Preparedness: [www.epa.gov/ebtpages/emergencypreparedness.html](http://www.epa.gov/ebtpages/emergencypreparedness.html)
  - l. USEPA Chemical Emergency Prevention and Preparedness Counterterrorism Site: [www.epa.gov/swercepp/cntr-ter.html](http://www.epa.gov/swercepp/cntr-ter.html)
  - m. Water Environment Federation: [www.wef.org](http://www.wef.org)